



# THORNTON HALL & LODGE

Welcoming individuals for  
RESIDENTIAL, DEMENTIA  
AND SHORT-STAY CARE.







# welcome to

## Thornton Hall & Lodge

### MAKING A DECISION AROUND CARE CAN BE AN EMOTIONAL EXPERIENCE AND WE ARE DELIGHTED THAT YOU ARE CONSIDERING OUR HOME.

Thornton Hall & Lodge is a modern and spacious, purpose-built care home located in the Thornton area of Liverpool, that provides 24-hour residential care for older people. We also provide more specialist support to those living with dementia

The home has 100 bedrooms, 4 of which are brand-new, luxurious extra-large bedrooms. All rooms have en-suite wetrooms and walk-in showers. The care home also features large ground floor lounges that open to patios and large secure south-facing gardens. Some of the ground floor bedrooms also have direct access to the extensive patio area.

Here at Thornton Hall & Lodge we welcome new people moving in with compassion and focus

on who they are, what is important to them and how we can support them to live life to the full. It is important that we help people feel at home, supporting not only with their healthcare but their social and emotional needs.

### LIFE AT THORNTON HALL & LODGE

Life in the home focuses on living as normally as possible, based on people's abilities and not disabilities. We strive to promote positive, individualised health and well-being outcomes, and take great pride in supporting people to make their own choices, living a fulfilled enriched life and being valued for the individual they are.

We encourage a sociable, comfortable environment which includes people spending time together, building new friendships and having plenty of opportunities to be engaged in what is meaningful to them. We have strong links with the local community, with varied events taking place in and outside of the home.



I FIND THIS CARE HOME TO BE  
VERY CLEAN AND THE STAFF  
EXTREMELY CARING. THERE ARE  
PLENTY OF ACTIVITIES TOO.

Daughter of person living at Thornton Hall

Source: carehome.co.uk

### WHAT MAKES THORNTON HALL & LODGE SPECIAL?



Large landscaped, secure,  
dementia friendly gardens



All bedrooms have en-suite  
wetrooms, are spacious and  
can be personalised



Wheelchair accessible home



Multi-cultural room



Cinema room where individuals  
can watch their favourite films



## ACTIVITIES

There is always something fun and exciting going on in the home. People have the choice of taking part in a wide range of activity, with support where needed. The home has a variety of indoor and outdoor spaces for people to make use of and spend time relaxing, socialising, continuing with a hobby or finding a new one, with quiet lounges available if people would prefer some time to themselves.

There are a number of events arranged in the home, each person can choose if they wish to join in. Occasional bus trips and outings are organised as well as visiting entertainers.

We're always looking for new ideas so if you've any suggestions for events, please don't hesitate to let us know, it is important that all are involved in making the home a great place to live.

## MEALTIME EXPERIENCE

We understand the importance of a nutritional, well-balanced diet and we cater for all dietary needs. We have a talented kitchen team who use quality, seasonal ingredients. People who live in the home are encouraged to take part in menu development.

Whether it's a home-made pie or a fresh fruit sponge, our cooks pride themselves on catering to the tastes of people living in the home. We provide a varied menu with a selection of choices, including snacks and fresh fruit which are available throughout the day and night.

## OUR CARE

We have many years' experience of supporting older people and their families, we understand the importance of providing comfortable, nurturing and welcoming environments.

Our focus is to provide individualised care and support of the highest quality, on a long-term or short-term basis, in homely surroundings. We strongly recognise the importance of relationships and the role of family in maintaining a person's identity.

Our team of highly-trained colleagues take time to get to know each person living in the home, who you are as a person, what is important to you, your values and beliefs, what makes you happy, worried or sad. What brings you joy and how you want to live your life, working with you, your family and friends. Thornton Hall & Lodge also offers short-term care, enabling you or a

carer to have a break and some well-deserved rest and recuperation. You may want your loved one to experience living at Thornton Hall & Lodge for a short while before deciding to make the move more permanent. We are happy to discuss your needs at any point.

## MAKING OUR HOME YOUR HOME

The people at Thornton Hall & Lodge are at the heart of what we do, and we are proud to have a great team delivering highly personalised care in the most professional way, and with the up-most kindness that treats each person with the dignity and respect they deserve.

The team works hard to provide a service that is individual to each person while encouraging a healthy, safe and enriching lifestyle.

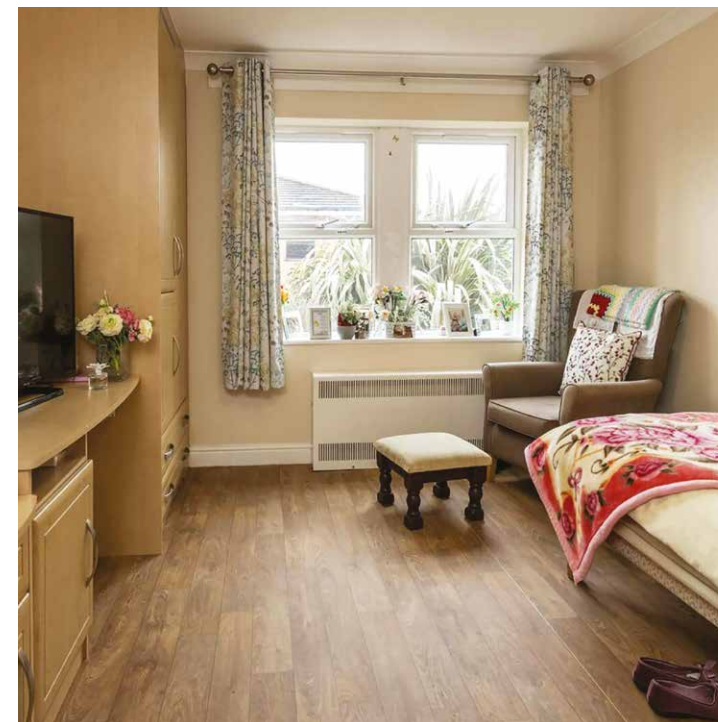
People's bedrooms are beautifully decorated with modern and bright fittings and furnishings throughout and are also equipped with nurse call facilities. We encourage people to personalise their rooms with pictures and photographs and they are welcome to bring personal items to ensure their comfort.

## THE TEAM

Training and coaching are key to our approach, and we invest extensively in our team to ensure everyone working at Thornton Hall & Lodge is highly skilled and able to support each person we care for. Team members are trained to foster empathy and use supportive, positive and enabling language. The supportive homely environments we have cultivated for all that live and work in Thornton Hall & Lodge means colleagues are happy and want to stay with us for a long time, ensuring continuity to our people.

### THORNTON HALL & LODGE CAN OFFER THE FOLLOWING TYPES OF CARE:

- Residential care
- Residential dementia care
- Short-term care



TO CARE FOR THOSE WHO ONCE CARED FOR US IS ONE OF THE GREATEST REWARDS OF WORKING IN CARE.

Care Assistant,  
Orchard Care Homes

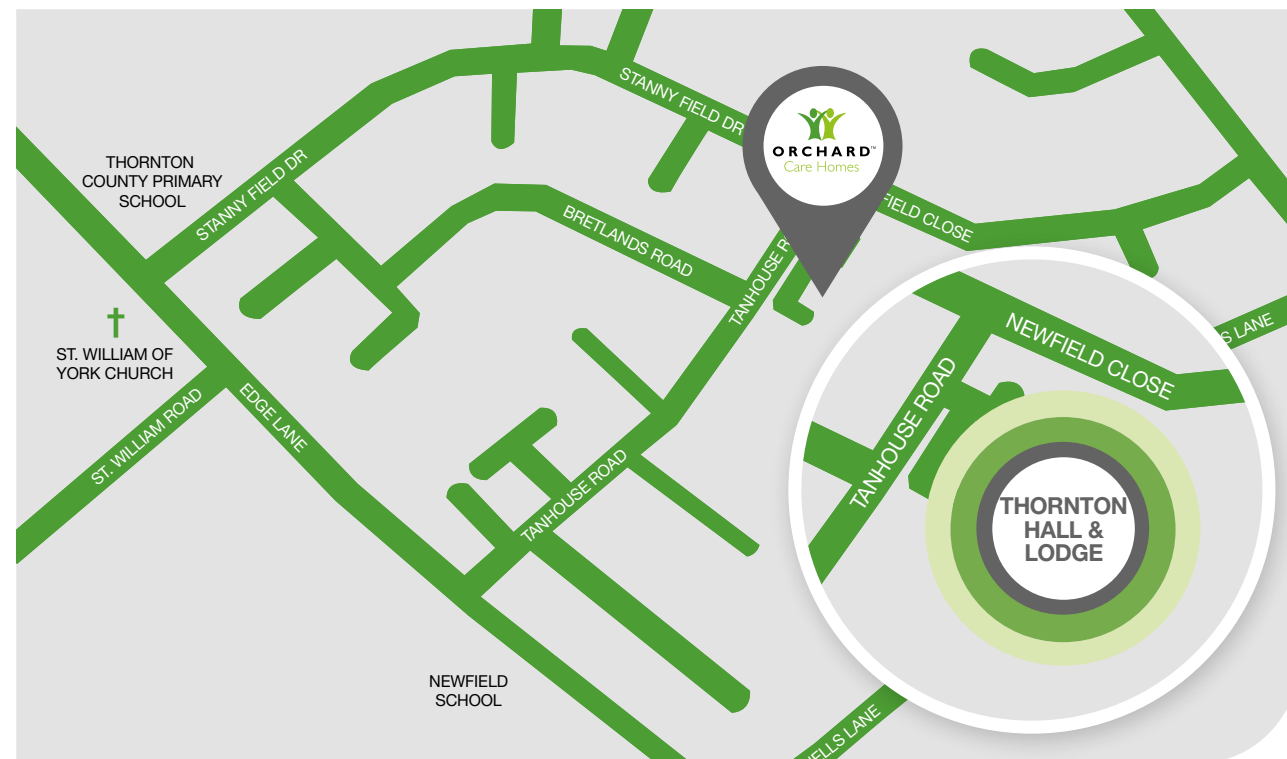


## HOW TO FIND US

16-18 Tanhouse Road, Thornton, Crosby, Liverpool, Merseyside, **L23 1UB**

Tel: **0151 924 2940** Email: **thornton.hall@orchardcarehomes.com**

**Directions:** We are located on Tanhouse Road and a few minutes walk from St. William of York Church on Edge Lane. The individual suburb at Thornton is just off the A565 and is close to the town of Crosby.



## VISITING

Thornton Hall & Lodge is your home, you are able to welcome family and friends to visit you at any time.

## FIND OUT MORE

For more information call: **0151 924 2940**  
visit: **[www.orchardcarehomes.com/thornton](http://www.orchardcarehomes.com/thornton)**  
or find us at:



## OTHER ORCHARD CARE HOMES NEARBY



**GREEN PARK**  
Warrington **WA5 3JS**  
Tel: **01925 791121**



**THREE BRIDGES**  
Warrington **WA4 1NT**  
Tel: **01925 418059**

If you would like a version of this brochure in large print please contact us.



“

WITH THE WONDERFUL CARE AND SUPPORT MUM HAS RECEIVED SINCE BEING IN THORNTON HALL, SHE HAS IMPROVED SO MUCH AND IS STARTING TO FEEL SO MUCH BETTER.

Daughter of person living at Thornton Hall

Source: [carehome.co.uk](http://carehome.co.uk)



## ABOUT ORCHARD

Orchard Care Homes has been running and managing care homes across the UK for over a decade. With a strong reputation in the care industry, we provide quality care for the elderly.

We pride ourselves on our people and we deliver a person-centred approach thanks to the dedication and passion of our teams, who go the extra mile to foster an essential sense of community within our homes.



The Hamlet, Hornbeam Park, Harrogate HG2 8RE

Tel: **01423 859859** Email: **info@orchardcarehomes.com**

Recruitment: **recruitment@orchardcarehomes.com**

Registered: 05245993

Regulated by



**orchardcarehomes.com**