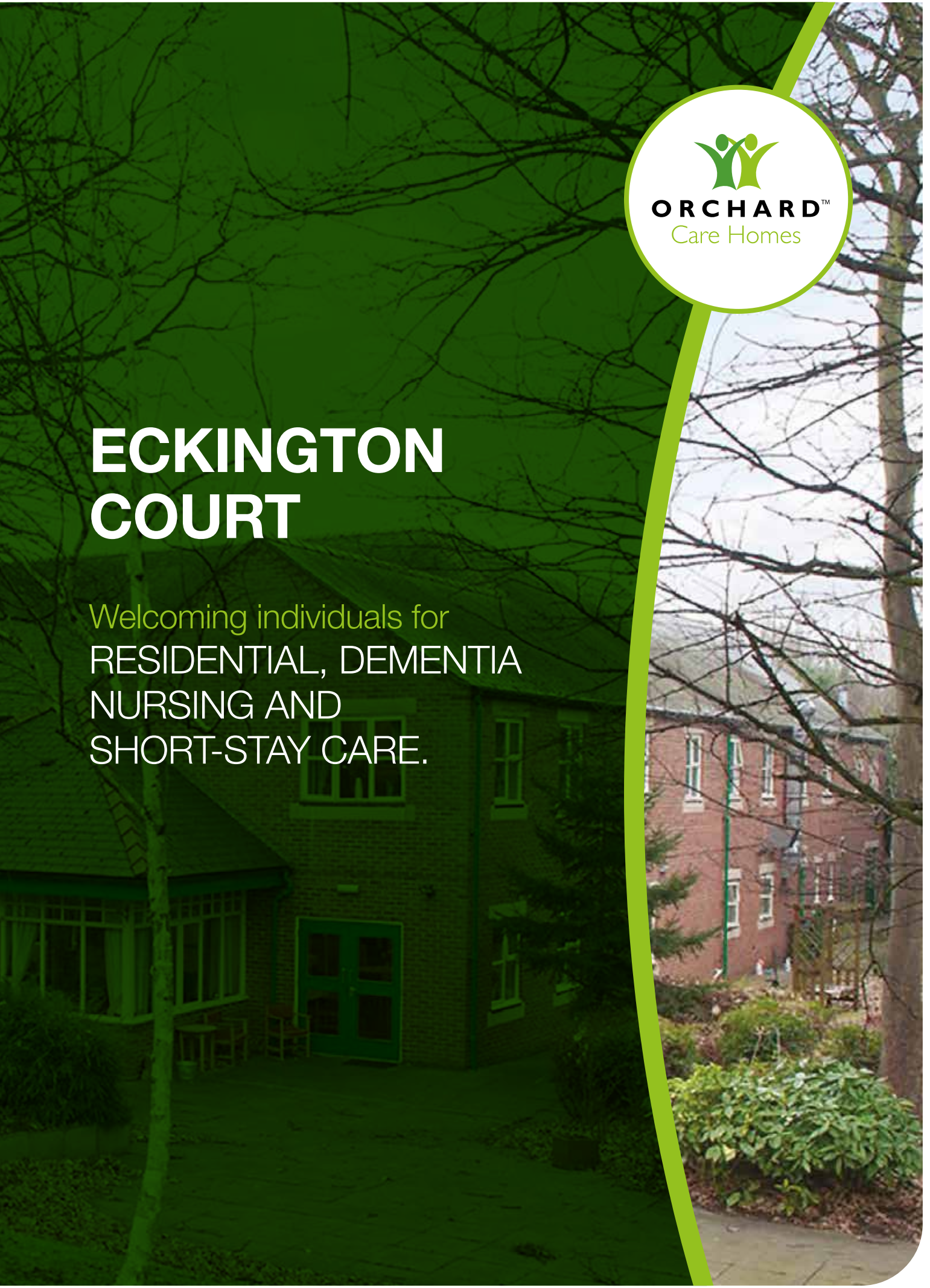




ECKINGTON COURT

Welcoming individuals for
RESIDENTIAL, DEMENTIA
NURSING AND
SHORT-STAY CARE.





welcome to Eckington Court

MAKING A DECISION AROUND CARE CAN BE AN EMOTIONAL EXPERIENCE AND WE ARE DELIGHTED THAT YOU ARE CONSIDERING OUR HOME.

Eckington Court is a purpose-built, single-storey modern care home. We provide nursing and 24-hour residential care for older people and offer more specialist support to those living with dementia.

The home has 50 bedrooms, most with an en-suite and all decorated to the highest standard. Individuals can often be found outdoors tending to the picturesque garden, the conservatory doors open up into the large garden space where our people enjoy sitting in the patio area.

Here at Eckington Court we welcome new people moving in with compassion and focus on who they are, what is important to them and

how we can support them to live life to the full. It is important that we help people feel at home, supporting not only with their healthcare but their social and emotional needs.

LIFE AT ECKINGTON COURT

Life in the home focuses on living as normally as possible, based on people's abilities and not disabilities. We strive to promote positive, individualised health and well-being outcomes, and take great pride in supporting people to make their own choices, living a fulfilled enriched life and being valued for the individual they are.

We encourage a sociable, comfortable environment which includes people spending time together, building new friendships and having plenty of opportunities to be engaged in what is meaningful to them. We have strong links with the local community, with varied events taking place in and outside of the home.



COMPASSIONATE, THOUGHTFUL,
COMFORTING AND RESPECTFUL
ARE JUST SOME OF THE WORDS
THAT DESCRIBE THE WONDERFUL
CARE OUR MUM RECEIVES
AT ECKINGTON COURT.

Daughter of person living at Eckington Court

Source: carehome.co.uk

WHAT MAKES ECKINGTON COURT SPECIAL?



Awarded Quality Premium
status for good care by
Derbyshire County Council



Highly qualified, long
standing colleagues



Our people created a
committee that steers the
vibrant activities programme



Conservatory, large
accessible garden with
raised flower beds, patio area



Tea room and library

ACTIVITIES

There is always something fun and exciting going on in the home. People have the choice of taking part in a wide range of activity, with support where needed. The home has a variety of indoor and outdoor spaces for people to make use of and spend time relaxing, socialising, continuing with a hobby or finding a new one, with quiet lounges available if people would prefer some time to themselves.

There are a number of events arranged in the home, each person can choose if they wish to join in. Occasional bus trips and outings are organised as well as visiting entertainers.

We're always looking for new ideas so if you've any suggestions for events, please don't hesitate to let us know, it is important that all are involved in making the home a great place to live.

MEALTIME EXPERIENCE

We understand the importance of a nutritional, well-balanced diet and we cater for all dietary needs. We have a talented kitchen team who use quality, seasonal ingredients. People who live in the home are encouraged to take part in menu development.

Whether it's a home-made pie or a fresh fruit sponge, our cooks pride themselves on catering to the tastes of people living in the home. We provide a varied menu with a selection of choices, including snacks and fresh fruit which are available throughout the day and night.

OUR CARE

We have many years' experience of supporting older people and their families, we understand the importance of providing comfortable, nurturing and welcoming environments.

Our focus is to provide individualised care and support of the highest quality, on a long-term or short-term basis, in homely surroundings. We strongly recognise the importance of relationships and the role of family in maintaining a person's identity.

Our team of highly-trained colleagues take time to get to know each person living in the home, who you are as a person, what is important to you, your values and beliefs, what makes you happy, worried or sad. What brings you joy and how you want to live your life, working with you, your family and friends. Eckington Court also offers short-term care, enabling you or a carer

to have a break and some well-deserved rest and recuperation. You may want your loved one to experience living at Eckington Court for a short while before deciding to make the move more permanent. We are happy to discuss your needs at any point.

MAKING OUR HOME YOUR HOME

The people at Eckington Court are at the heart of what we do, and we are proud to have a great team delivering highly personalised care in the most professional way, and with the up-most kindness that treats each person with the dignity and respect they deserve.

The team works hard to provide a service that is individual to each person while encouraging a healthy, safe and enriching lifestyle.

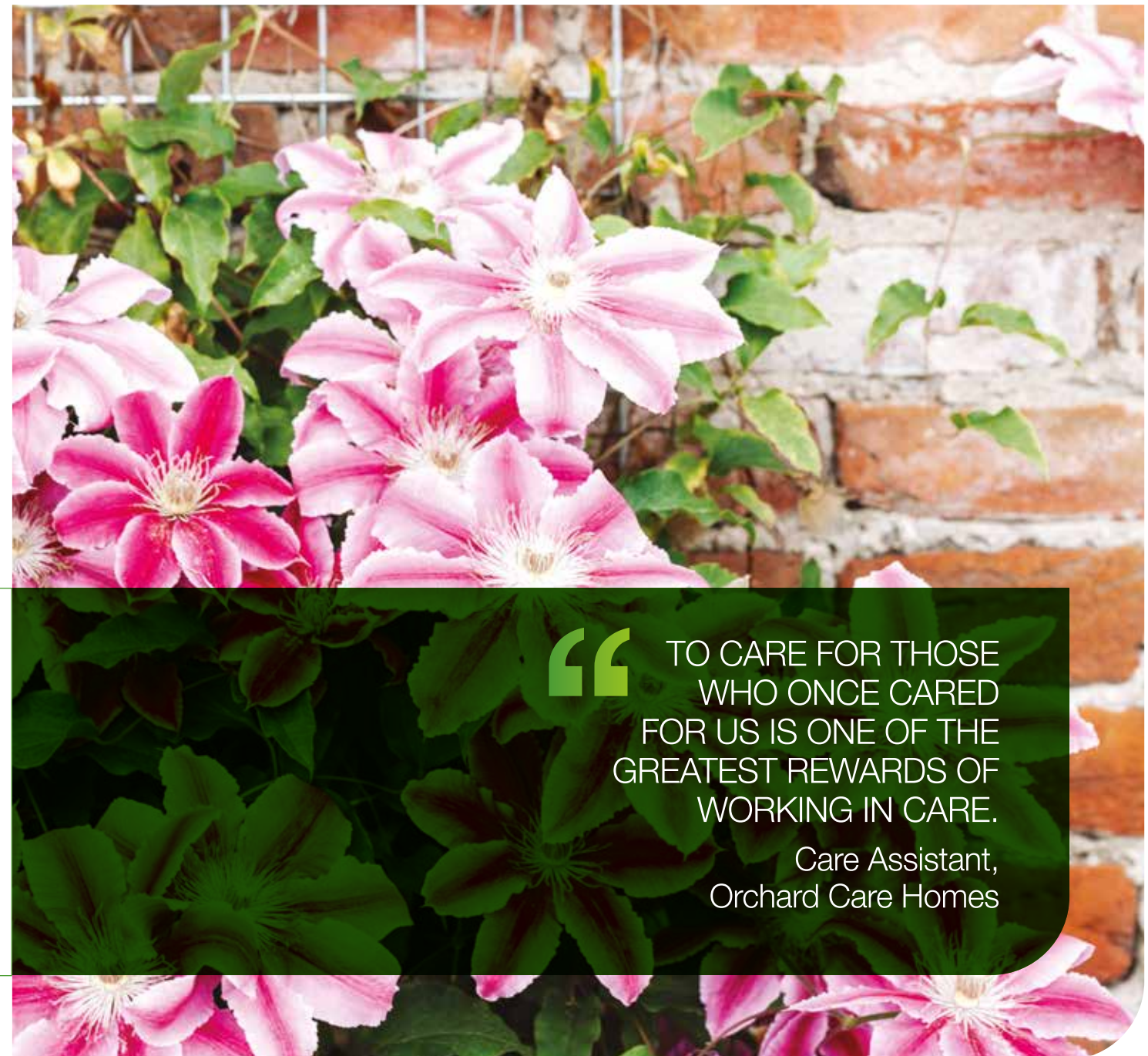
People's bedrooms are beautifully decorated with modern and bright fittings and furnishings throughout and are also equipped with nurse call facilities. We encourage people to personalise their rooms with pictures and photographs and they are welcome to bring personal items to ensure their comfort.

THE TEAM

Training and coaching is key are our approach, and we invest extensively in our team to ensure everyone working at Eckington Court is highly skilled and able to support each person we care for. Team members are trained to foster empathy and use supportive, positive and enabling language. The supportive homely environments we have cultivated for all that live and work in Eckington Court means colleagues are happy and want to stay with us for a long time, ensuring continuity to our people.

ECKINGTON COURT CAN OFFER THE FOLLOWING TYPES OF CARE:

- Residential care
- Nursing care
- Short-term care



TO CARE FOR THOSE
WHO ONCE CARED
FOR US IS ONE OF THE
GREATEST REWARDS OF
WORKING IN CARE.

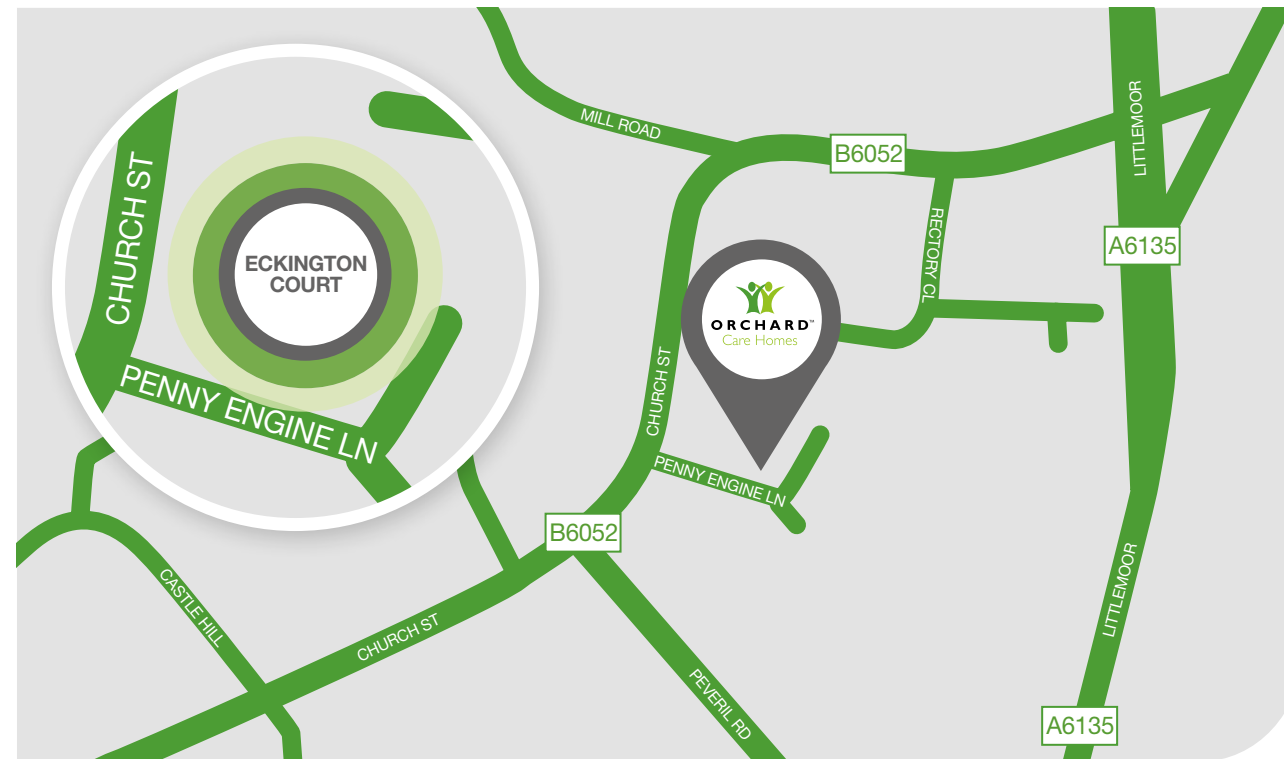
Care Assistant,
Orchard Care Homes

HOW TO FIND US

Penny Engine Lane, Off Church Street, Eckington, Derbyshire, **S21 4BF**

Tel: **01246 430066** Email: eckingtoncourt@orchardcarehomes.com

Directions: From Eckington – head north-east on Pinfold Street/B6052 towards Castle Hill. Turn right onto Penny Engine Lane and Eckington Court is situated on the right.



VISITING

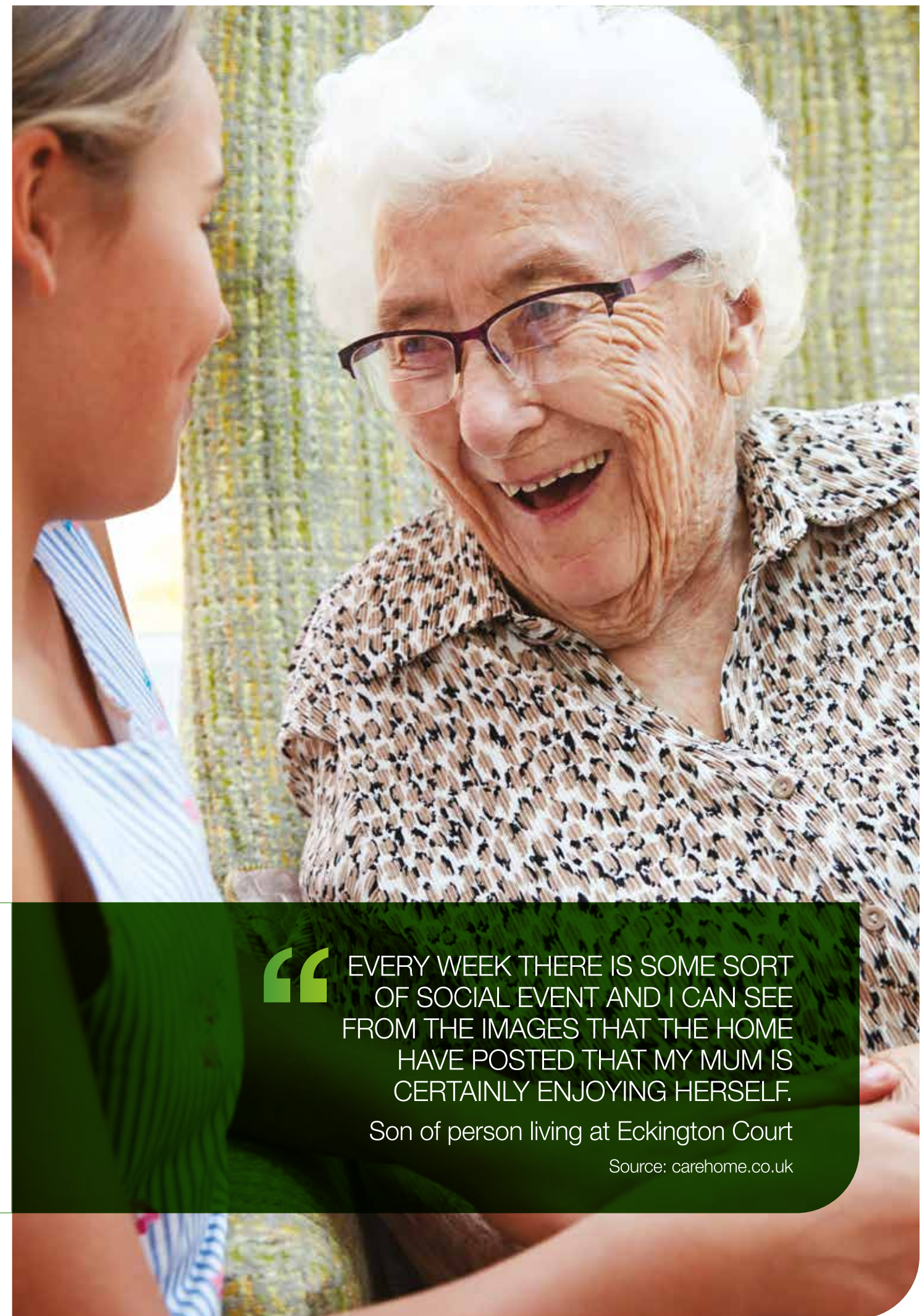
Eckington Court is your home, you are able to welcome family and friends to visit you at any time.

FIND OUT MORE

For more information call: **01246 430066**

visit: www.orchardcarehomes.com/eckington-court

or find us at:



OTHER ORCHARD CARE HOMES NEARBY



RIVERDALE

Chesterfield **S41 7LL**

Tel: **01246 275003**



MILLFIELD

Chesterfield **S44 6XP**

Tel: **01246 825959**

“ EVERY WEEK THERE IS SOME SORT OF SOCIAL EVENT AND I CAN SEE FROM THE IMAGES THAT THE HOME HAVE POSTED THAT MY MUM IS CERTAINLY ENJOYING HERSELF.

Son of person living at Eckington Court

Source: carehome.co.uk

If you would like a version of this brochure in large print please contact us.

ABOUT ORCHARD

Orchard Care Homes has been running and managing care homes across the UK for over a decade. With a strong reputation in the care industry, we provide quality care for the elderly.

We pride ourselves on our people and we deliver a person-centred approach thanks to the dedication and passion of our teams, who go the extra mile to foster an essential sense of community within our homes.



The Hamlet, Hornbeam Park, Harrogate HG2 8RE

Tel: 01423 859859 Email: info@orchardcarehomes.com

Recruitment: recruitment@orchardcarehomes.com

Registered: 05245993



orchardcarehomes.com