



ASHLEA MEWS

Welcoming individuals for
RESIDENTIAL, DEMENTIA
AND SHORT-STAY CARE.





welcome to Ashlea Mews

MAKING A DECISION AROUND CARE CAN BE AN EMOTIONAL EXPERIENCE AND WE ARE DELIGHTED THAT YOU ARE CONSIDERING OUR HOME.

Ashlea Mews is a two-storey care home located in the heart of a residential area in South Shields, offering long and short-term support to older people. We also provide more specialist support to those living with dementia.

The home has 40 bedrooms, all of which are en-suite and decorated to a high standard. The home offers landscaped gardens which are lovely for short walks and fresh air, individuals can often be found relaxing there.

Here at Ashlea Mews we welcome new people moving in with compassion and focus on who they are, what is important to them and

how we can support them to live life to the full. It is important that we help people feel at home, supporting not only with their healthcare but their social and emotional needs.

LIFE AT ASHLEA MEWS

Life in the home focuses on living as normally as possible, based on people's abilities and not disabilities. We strive to promote positive, individualised health and well-being outcomes, and take great pride in supporting people to make their own choices, living a fulfilled enriched life and being valued for the individual they are.

We encourage a sociable, comfortable environment which includes people spending time together, building new friendships and having plenty of opportunities to be engaged in what is meaningful to them. We have strong links with the local community, with varied events taking place in and outside of the home.



MY NANA HAD BEEN AT ASHLEA MEWS FOR FOUR YEARS UNTIL SHE PASSED AWAY THERE. THE STAFF WERE LOVELY AND TREATED HER AS IF SHE WERE THEIR OWN FAMILY.

Granddaughter of person living at Ashlea Mews

Source: carehome.co.uk

WHAT MAKES ASHLEA MEWS SPECIAL?



All bedrooms en-suite, spacious and can be personalised



Home Manager operates an 'open door' policy



Long-serving and consistent team



Landscaped gardens

ACTIVITIES

There is always something fun and exciting going on in the home. People have the choice of taking part in a wide range of activity, with support where needed. The home has a variety of indoor and outdoor spaces for people to make use of and spend time relaxing, socialising, continuing with a hobby or finding a new one, with quiet lounges available if people would prefer some time to themselves.

There are a number of events arranged in the home, each person can choose if they wish to join in. Occasional bus trips and outings are organised as well as visiting entertainers.

We're always looking for new ideas so if you've any suggestions for events, please don't hesitate to let us know, it is important that all are involved in making the home a great place to live.

MEALTIME EXPERIENCE

We understand the importance of a nutritional, well-balanced diet and we cater for all dietary needs. We have a talented kitchen team who use quality, seasonal ingredients. People who live in the home are encouraged to take part in menu development.

Whether it's a home-made pie or a fresh fruit sponge, our cooks pride themselves on catering to the tastes of people living in the home. We provide a varied menu with a selection of choices, including snacks and fresh fruit which are available throughout the day and night.

OUR CARE

We have many years' experience of supporting older people and their families, we understand the importance of providing comfortable, nurturing and welcoming environments.

Our focus is to provide individualised care and support of the highest quality, on a long-term or short-term basis, in homely surroundings. We strongly recognise the importance of relationships and the role of family in maintaining a person's identity.

Our team of highly-trained colleagues take time to get to know each person living in the home, who you are as a person, what is important to you, your values and beliefs, what makes you happy, worried or sad. What brings you joy and how you want to live your life, working with you, your family and friends. Ashlea Mews also offers short-term care, enabling you or a carer to have a break and some well-deserved rest

and recuperation. You may want your loved one to experience living at Ashlea Mews for a short while before deciding to make the move more permanent. We are happy to discuss your needs at any point.

MAKING OUR HOME YOUR HOME

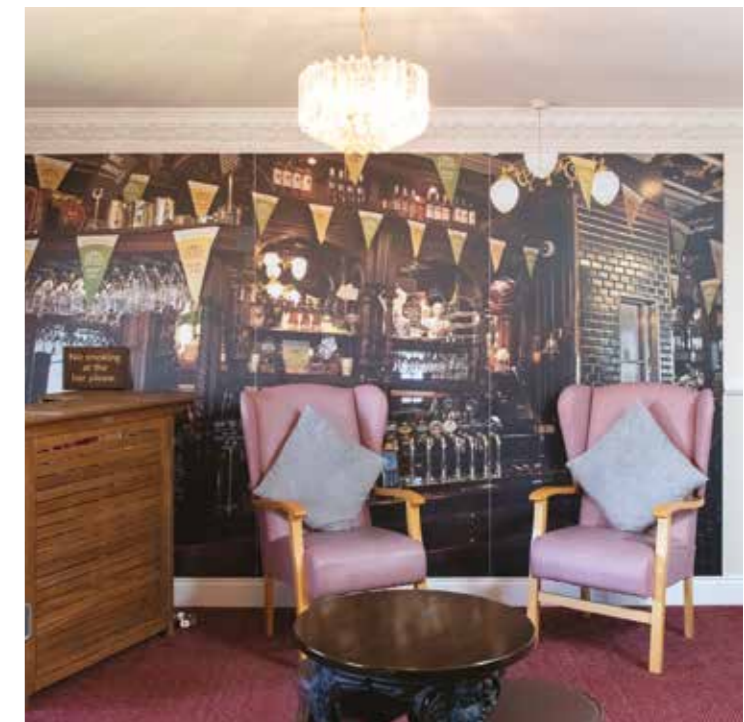
The people at Ashlea Mews are at the heart of what we do, and we are proud to have a great team delivering highly personalised care in the most professional way, and with the up-most kindness that treats each person with the dignity and respect they deserve.

The team works hard to provide a service that is individual to each person while encouraging a healthy, safe and enriching lifestyle.

People's bedrooms are beautifully decorated with modern and bright fittings and furnishings throughout and are also equipped with nurse call facilities. We encourage people to personalise their rooms with pictures and photographs and they are welcome to bring personal items to ensure their comfort.

THE TEAM

Training and coaching are key to our approach, and we invest extensively in our team to ensure everyone working at Ashlea Mews is highly skilled and able to support each person we care for. Team members are trained to foster empathy and use supportive, positive and enabling language. The supportive homely environments we have cultivated for all that live and work in Ashlea Mews means colleagues are happy and want to stay with us for a long time, ensuring continuity to our people.



ASHLEA MEWS CAN OFFER THE FOLLOWING TYPES OF CARE:

- Residential care
- Residential dementia care
- Short-term care

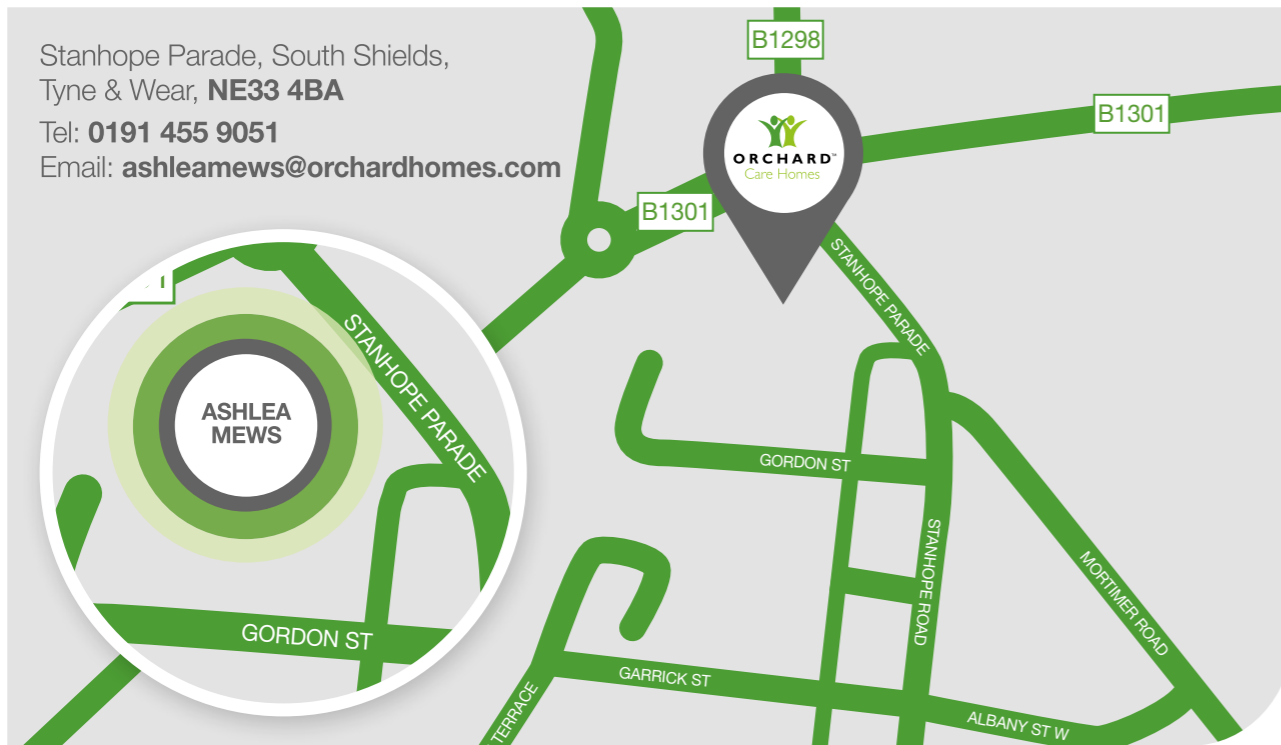


TO CARE FOR THOSE WHO ONCE CARED FOR US IS ONE OF THE GREATEST REWARDS OF WORKING IN CARE.

Care Assistant,
Orchard Care Homes

HOW TO FIND US

Stanhope Parade, South Shields,
Tyne & Wear, **NE33 4BA**
Tel: **0191 455 9051**
Email: ashleamews@orchardhomes.com



Directions: Head south-west on Dale Street and turn right onto Woodbine Street. Turn left onto Ocean Rd/A183. At the roundabout go straight on, 2nd roundabout, take the 3rd exit onto Beach Rd/A183 and then turn right onto Crossgate/A194. 3rd roundabout, take the 2nd exit onto Western Approach/A194, 4th roundabout, take the 2nd exit for Western Approach, 5th roundabout, take the 1st exit onto Laygate/B1301. At the 6th roundabout, take the 1st exit onto Dean Rd/B1301 then the 4th exit on the next roundabout to Stanhope Parade/B1298. Ashlea Mews will then be on the left.

VISITING

Ashlea Mews is your home, you are able to welcome family and friends to visit you at any time.

FIND OUT MORE

For more information call: **0191 455 9051**
visit: www.orchardcarehomes.com/ashlea-mews
or find us at:



OTHER ORCHARD CARE HOMES NEARBY

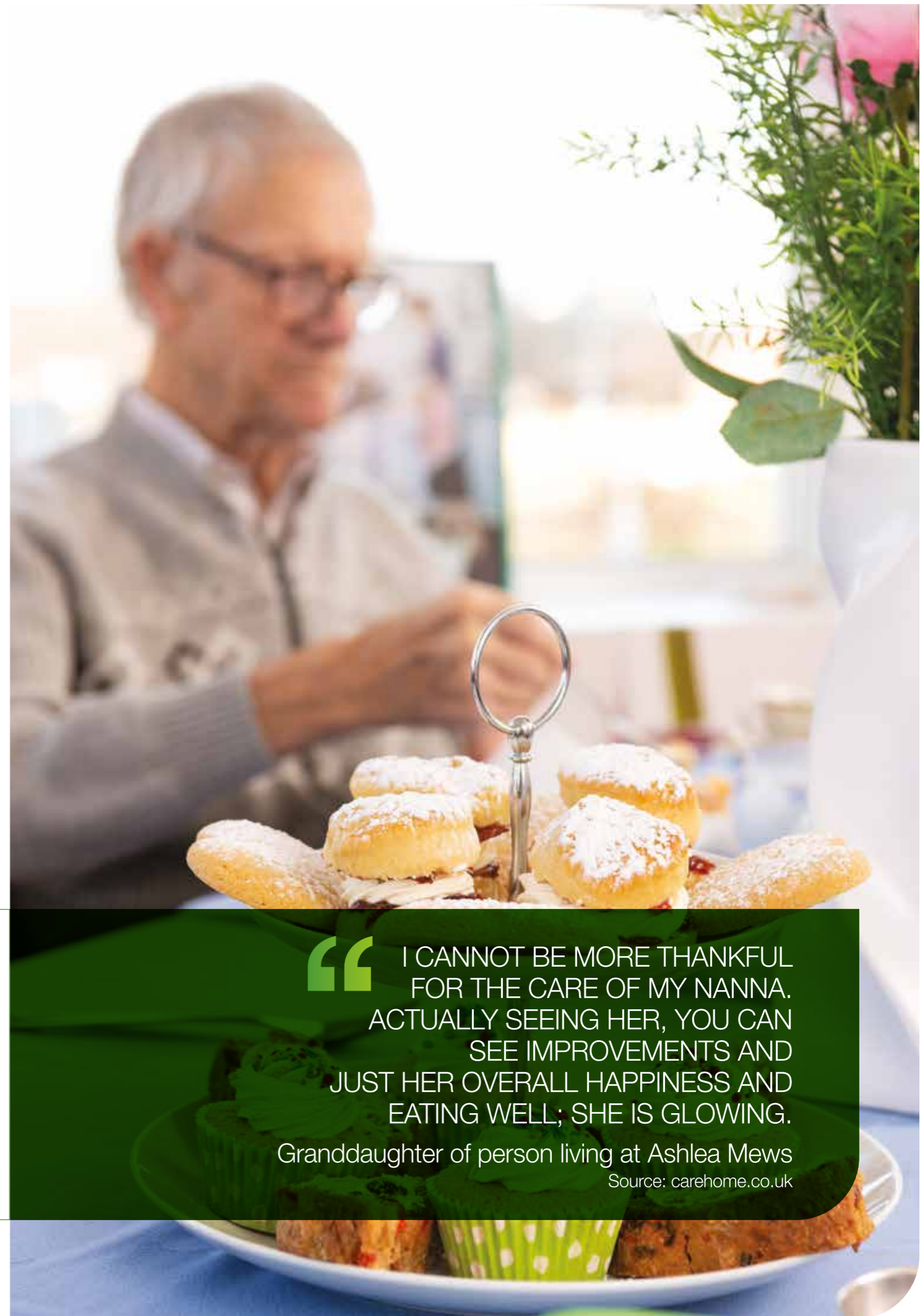


LANSBURY COURT
Sunderland **SR5 3DF**
Tel: **0191 549 3950**



ASHLEA LODGE
Sunderland **SR4 7AB**
Tel: **0191 510 9405**

If you would like a version of this brochure in large print please contact us.



I CANNOT BE MORE THANKFUL FOR THE CARE OF MY NANNA. ACTUALLY SEEING HER, YOU CAN SEE IMPROVEMENTS AND JUST HER OVERALL HAPPINESS AND EATING WELL; SHE IS GLOWING.

Granddaughter of person living at Ashlea Mews

Source: carehome.co.uk

ABOUT ORCHARD

Orchard Care Homes has been running and managing care homes across the UK for over a decade. With a strong reputation in the care industry, we provide quality care for the elderly.

We pride ourselves on our people and we deliver a person-centred approach thanks to the dedication and passion of our teams, who go the extra mile to foster an essential sense of community within our homes.



The Hamlet, Hornbeam Park, Harrogate HG2 8RE
Tel: **01423 859859** Email: info@orchardcarehomes.com
Recruitment: recruitment@orchardcarehomes.com

Registered: 05245993



orchardcarehomes.com